

TENTH EILAT CONFERENCE ON NEW ANTIEPILEPTIC DRUGS (EILAT X)

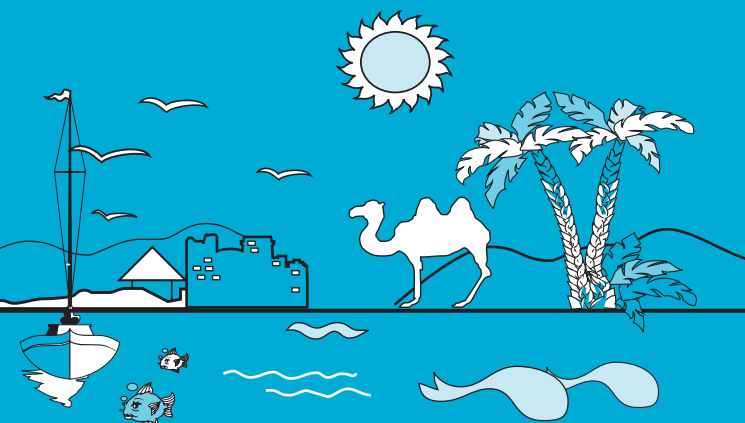
Eilat, Israel

April 25-29, 2010

Fourth Announcement and Call for Papers

Under the auspices of:

The Hebrew University of Jerusalem, Israel



Dear Colleague,

Based on the success of the past nine Eilat Conferences on New Antiepileptic Drugs (AEDs), the Organizing Committee takes pleasure in inviting you to participate in the Tenth Eilat Conference on New Antiepileptic Drugs (EILAT X), which will take place in Eilat, Israel, April 25 – 29, 2010.

As in the past, our conference program is designed to provide an in-depth progress report on new antiepileptic drugs in different stages of development, as well as to present new findings on second-generation treatments. In addition, sessions will be devoted to:

Learning from the Past: Lessons Learnt after 18 years of EILAT Conferences, and Detecting, Assessing and Preventing Adverse Effects of AEDs.

Eilat, located on the Red Sea and southern most tip of Israel, far from the center, is Israel's favorite holiday resort. Eilat offers the exciting atmosphere of sun and sea, which forms the perfect backdrop for our conference.

In 2010 we will celebrate the 10th EILAT Conference, and we are pleased that this Jubilee conference will take place in its original home of Eilat.

We look forward to welcoming you to EILAT X in April 2010.

Sincerely yours,

ORGANIZING COMMITTEE

Meir Bialer, Jerusalem, Israel

Svein I. Johannessen, Sandvika, Norway

Rene H. Levy, Seattle, USA

Emilio Perucca, Pavia, Italy

Torbjörn Tomson, Stockholm, Sweden

H. Steve White, Salt Lake City, USA

CONFERENCE PROGRAM

as at November 2009

MONDAY, APRIL 26, 2010

08:00 – 08:30 **Opening Session**

OPENING REMARKS AND GREETINGS

08:30 – 12:20 **Session I**

LEARNING FROM THE PAST: LESSONS LEARNT AFTER 18 YEARS OF EILAT CONFERENCES

Chairpersons: **E. Abadie**, France
R. Katz, USA

- 08:30 HOW STRATEGIES FOR DRUG DISCOVERY HAVE
CHANGED
H.S. White, USA
- 08:50 Discussion
- 09:00 WHAT HAVE WE LEARNT ABOUT PREDICTING
EFFICACY AND SAFETY
B. Schmidt, Germany
- 09:20 Discussion
- 09:30 HOW HAVE TRIAL DESIGNS EVOLVED
J. French, USA
- 09:50 Discussion
- 10:00 HOW HAVE REGULATORY REQUIREMENTS
CHANGED
R. Katz, USA
- 10:20 Discussion
- 10:30 *Coffee*
- 11:00 HOW INDUSTRY CHANGED IN ITS INTEREST OR
APPROACH TO DEVELOPING NEW AEDs
• **H. Klitgaard**, Belgium
• **R. Twyman**, USA
- 11:20 Discussion
- 11:30 HAVE THE AEDs INTRODUCED SINCE EILAT I
MADE A DIFFERENCE FOR EFFICACY?
E. Perucca, Italy
- 11:50 Discussion
- 12:00 HAVE THE AEDs INTRODUCED SINCE EILAT I
MADE A DIFFERENCE FOR SAFETY?
T. Tomson, Sweden
- 12:20 Discussion

TUESDAY, APRIL 27, 2010

08:00 – 16:00 **Session II**

DRUGS IN DEVELOPMENT

- 08:00 BRIVARACETAM (ucb 34714)
S. Lu, *UCB Inc, USA*
- 08:20 Discussion
- 08:30 CARISBAMATE (RWJ-333369)
G.P. Novak, *Johnson & Johnson Pharmaceutical Research & Development, USA*
- 08:50 Discussion
- 09:00 2-DEOXY-(D)-GLUCOSE
Presented by **T.P. Sutula**, *University of Wisconsin, USA*
- 09:20 Discussion
- 09:30 GANAXOLONE
J. Tsai, *Marinus Pharmaceuticals, USA*
- 09:50 Discussion
- 10:00 Coffee
- 10:30 HUPERZINE A
Presented by **S. Schachter**, *Harvard Medical School, USA*
- 10:50 Discussion
- 11:00 NAX 5055
NeuroAdjuvants, USA
Presented by **G. Bulaj**, *University of Utah, USA*
- 11:20 Discussion
- 11:30 PERAMPANEL (E2007)
A. Laurenza, *Eisai Inc, USA*
- 11:50 Discussion
- 12:00 RETIGABINE
GlaxoSmithKline, UK and Valeant Pharmaceuticals International, USA
Presented by **J. Hammond**, *Valeant Pharmaceuticals International, USA*
- 12:20 Discussion
- 12:30 *Lunch*
- 13:30 T-2000
H. Rutman, *Taro Pharmaceuticals, USA*
- 13:50 Discussion

TUESDAY, APRIL 27, 2010 (cont)

08:00 – 16:00 Session II (cont.)

- 14:00 T-2007
A. Yacobi, *Taro Pharmaceuticals, USA*
- 14:20 Discussion
- 14:30 TONABERSAT
P. Blower, *Minster Pharmaceuticals, UK*
- 14:50 Discussion
- 15:00 VALPROIC ACID – 2nd GENERATION
Presented by **M. Bialer**, *The Hebrew University of Jerusalem, Israel*
- 15:20 Discussion
- 15:30 YKP3089
S.J. Lee, *SK Life Science, USA*
- 15:50 Discussion
- 16:00 *Coffee*

WEDNESDAY, APRIL 28, 2010

08:00 – 16:20 Session III

PROGRESS REPORT ON SECOND-GENERATION TREATMENTS

- 08:00 CLOBAZAM
M. Borsody, *Lundbeck Inc.*, USA
- 08:20 Discussion
- 08:30 ESLICARBAZEPINE ACETATE
BIAL-Portela & C., SA, Portugal and Eisai, UK
Presented by **E. Ben Menachem**, University of Gothenburg, Sweden
- 08:50 Discussion
- 09:00 LACOSAMIDE
P. Doty, *UCB S.A.*, USA
- 09:20 Discussion
- 09:30 LEVETIRACETAM
F. Tonner, *UCB S.A.* Belgium
- 09:50 Discussion
- 10:00 *Coffee*
- 10:30 PREGABALIN
Pfizer, Inc., USA
- 10:50 Discussion
- 11:00 RUFINAMIDE
Eisai, UK
- 11:20 Discussion
- 11:30 STIRIPENTOL – MECHANISMS OF ACTION
Biocodex, France
Presented by **J.L. Fisher**, University of South Carolina, USA
- 11:50 Discussion
- 12:00 STIRIPENTOL – CLINICAL DATA
Biocodex, France
Presented by **C. Chiron**, Necker-Enfants Malades Hospital, Paris, France
- 12:20 Discussion
- 12:30 *Lunch*

WEDNESDAY, APRIL 28, 2010 (cont)

08:00 – 16:20 Session III (cont.)

- 13:30 TOPIRAMATE
L. Ford, *Johnson & Johnson Pharmaceutical Research & Development, USA*
- 13:50 Discussion
- 14:00 VIGABATRIN
S. Sagar, *Lundbeck Inc., USA*
- 14:20 Discussion
- 14:30 ZONISAMIDE
R. van Maanen, *Eisai, UK*
- 14:50 Discussion
- 15:00 *Coffee*
- 15:30 LAMOTRIGINE EXTENDED RELEASE (ER)
FORMULATION
K.E. VanLandingham, *GlaxoSmithKline, USA*
- 15:50 Discussion
- 16:00 OXCARBAZEPINE MODIFIED-RELEASE (MR)
FORMULATION
Desitin Arzneimittel GmbH, Germany
Presented by **B.J. Steinhoff**, *Epilepsy Center Kork, Germany*
- 16:20 Discussion

THURSDAY, APRIL 29, 2010

08:00 – 12:20 **Session IV**

DETECTING, ASSESSING AND PREVENTING ADVERSE EFFECTS OF AEDs

- 08:30 GENETIC PREDISPOSITION TO IDIOSYNCRATIC
EFFECTS: IMPLICATIONS FOR PREVENTION
P. Kwan, Hong Kong
- 08:50 Discussion
- 09:00 SCREENING FOR ADVERSE AED EFFECTS:
FROM RESEARCH TO APPLICATIONS IN
ROUTINE PRACTICE
F. Gilliam, USA
- 09:20 Discussion
- 09:30 MINIMIZING ADVERSE CNS EFFECTS: RISK
FACTORS AND IMPLICATIONS FOR DRUG
SELECTION DOSING
- COGNITIVE EFFECTS, **G.A. Baker**, UK
- BEHAVIOURAL AND PSYCHIATRIC EFFECTS,
A. Kanner, USA
- 09:50 Discussion
- 10:00 MECHANISMS OF DRUG ACTION AS
PREDICTORS OF ADVERSE EFFECTS OF
INDIVIDUAL AEDs AND AED COMBINATIONS
G. Sills, UK
- 10:20 Discussion
- 10:30 *Coffee*
- 11:00 METANALYSIS OF DATA FROM REGULATORY
DRUG TRIALS TO EXPLORE TREATMENT-
RELATED ADVERSE EFFECTS: RATIONALE AND
LIMITATIONS
R. Katz, USA
- 11:20 Discussion
- 11:30 CONTRIBUTIONS OF TDM TO THE
DEVELOPMENT OF SAFER AND MORE
EFFECTIVE AED TREATMENT
D. Berry, UK
- 11:50 Discussion
- 12:00 DRUG PRESCRIPTION REGISTRIES:
POSSIBILITIES AND LIMITATIONS IN DETECTING
ADVERSE AED EFFECTS
P. Mattsson, Sweden
- 12:20 Discussion

CALL FOR PAPERS

Deadline – February 1, 2010

Participants wishing to present a paper are requested to submit an abstract to the Secretariat, by **e-mail** to:

eilatx@targetconf.com

Abstracts should be saved as a Word document and attached to the e-mail.

All accepted abstracts will be scheduled for poster presentation. Inclusion of abstracts in the scientific program is dependent on payment of registration fees.

INSTRUCTIONS FOR THE PREPARATION OF ABSTRACTS

1. Abstracts must be submitted in English.
2. Title should be typed in CAPITAL LETTERS, bold and left aligned.
3. Presenting author's name should be underlined and bolded.
4. If submitting more than one abstract, each abstract must be sent as a separate e-mail message and the title should indicate that these are separate abstracts, i.e. JILL BROWN ABSTRACT 1; JILL BROWN ABSTRACT 2; etc.
5. The entire abstract should be approx. 250 words including title, author(s), institution(s), country and acknowledgements.
6. Recommended font is Times New Roman, size 12 points, single spacing
7. No end-notes or frames are acceptable.
8. Please note: Faxed abstracts will not be accepted.

GENERAL INFORMATION

LOCATION

The Isrotel Royal Beach Hotel, Eilat, is the conference venue. Eilat, located on the Red Sea and southern most tip of Israel, is Israel's favorite holiday resort.

LANGUAGE

The official language of the conference is English.

REGISTRATION FEES

	Before	After
Participant	€ 500	€ 550
Student*	€ 350	€ 400
Young Delegate (under 35)**	€ 350	€ 400
Accompanying Person	€ 200	€ 250
Gala Dinner (optional)	€ 75	€ 75

* Upon presentation of bona fide student identification or official certification of status

** Upon presentation of copy of passport indicating date of birth

Fee for **participant, student and young delegate** includes: entrance to all sessions, program and conference kit, get-together reception, boat trip, coffee at breaks, and 2 lunches.

Fee for **accompanying person** includes: get-together reception, boat trip and 2 activities to be arranged during session times.

PAYMENT

Payment for registration fees must be paid directly to the Secretariat and can be made by cheque, bank transfer* or credit card. Kindly refer to the registration form for details.

* Please ensure that the name/s of the participant/s and Conference (EILAT X) are clearly stated on the bank transfer. Bank charges are the responsibility of the payer and should be paid at source in addition to the registration fees.

CANCELLATION POLICY

Our refund policy is based upon receiving notification as follows:

Received prior to January 15: Full refund less € 50 handling fee

Received from January 15 up until February 1: 50% refund

From March 1: No refund.

LETTER OF INVITATION

Upon request, the Secretariat will send a personal invitation to participate in the Conference. It should be understood that such an invitation is only meant to assist participants raise travel funds or obtain a visa and does not represent a commitment on the part of the Organizing Committee.

CLIMATE AND CLOTHING

Eilat is warm in April with average highs of 30°C (approx. 82°F) and lows of 18°C (approx 64°F). Clothing is informal for all occasions. Don't forget your sunglasses, swimwear, hat and comfortable walking shoes.

VISAS

We suggest you confirm with your travel agent whether you will require a visa.

SOCIAL EVENTS

GET-TOGETHER, SUNDAY, APRIL 25, 2010

An informal get-together to renew acquaintances and meet new colleagues. The get-together will be held at the Royal Beach Hotel. All registered participants and registered accompanying persons are invited to attend.

BOAT RIDE, MONDAY, APRIL 26, 2010

An afternoon boat ride on the Red Sea. All registered participants and registered accompanying persons are invited to attend.

GALA DINNER, WEDNESDAY, APRIL 28, 2010 (OPTIONAL)

The Gala Dinner will take place at the Royal Beach Hotel. Please indicate on the registration form if you would like to attend.

ACCOMPANYING PERSONS PROGRAM

Registered accompanying persons are invited to join the get-together reception, the afternoon boat-trip, a cooking lesson with the hotel chef and a trip to King Solomon's Mines and the Timna Park.

CONFERENCE SECRETARIAT

For any additional information or assistance, please contact:

The Secretariat

EILAT X

P.O. Box 29041, Tel Aviv 61290, Israel

Tel: +972 3 5175150, Fax: +972 3 5175155

email: eilatx@targetconf.com

Visit our website: www.eilat-aeds.com

TRAVEL AND ACCOMMODATION

Target Conferences Ltd.

PO Box 29041, Tel Aviv 61290, Israel

Tel: +972 3 5175150, Fax: +972 3 5175155

e-mail: eilatx@targetconf.com

Target Conferences is the official travel agent for the Tenth Eilat Conference on New Antiepileptic Drugs and will be offering special reduced rates for accommodation and conference tours.

Hotel space has been blocked by Target Conferences as follows:

	Isrotel Royal Beach	Isrotel Royal Garden
Single room (one person)	€ 180	€ 165
Double room (two people)	€ 200	€ 180

The Royal Beach is the conference venue and the Royal Garden is situated across the road.

The Royal Garden is an all-suite hotel with a kitchenette in each suite.

Rates are per room, per night, based on bed and breakfast.

HOW TO BOOK

In order to benefit from the special rate, kindly ask your Travel Agent to contact TARGET CONFERENCES or send enclosed Accommodation Form with the required deposit of € 200 to Target Conferences.

Kindly note that payment will be taken in dollars according to rate of exchange on day of payment.

PAYMENT

Payment for accommodation reserved directly by Target Conferences is to be made (less required deposit of € 200) upon arrival at the Target Conferences Hospitality Desk at the venue, with a 3% surcharge. If Target Conferences receives full payment for all services reserved prior to arrival, there will be no surcharge. Target Conferences accepts travelers cheques and major credit cards.

AIR TRAVEL

It is recommended to book your international air travel to/from Ben Gurion International Airport (Tel Aviv) with your local travel agent and/or on the internet, and to consult or book your domestic flights to/from Eilat with a representative of Target Conferences.

TRANSPORT TO/FROM BEN GURION INTERNATIONAL AIRPORT and SDE DOV DOMESTIC AIRPORT (TEL AVIV) FOR FLIGHTS TO EILAT

If you have booked a connecting domestic flight to Eilat departing from Ben Gurion Airport, free shuttles are available for transportation between the two terminals at the airport. Remember to allow at least 2.5 hours between the two flights. If you have booked a connecting domestic flight to Eilat departing from Sde Dov Airport (the domestic airport situated in north Tel Aviv), taxis are available to Sde Dov from Ben Gurion airport at all times. For these domestic flights, we suggest you allow 3-3.5 hours between the connecting flights.

PRE-CONFERENCE OPTIONAL TOUR A – TEL AVIV/EILAT/PETRA

One night Tel Aviv, one night Eilat

Itinerary

FRIDAY, APRIL 23, 2010

All day: Arrivals

Overnight: Renaissance Hotel, Tel Aviv

SATURDAY, APRIL 24, 2010

Day at leisure to enjoy Tel Aviv with its beautiful promenade. Transfer to the Sde Dov Domestic Airport for flight to Eilat.

Arrival in Eilat, transfer to hotel

Overnight: Isrotel Royal Beach, Eilat

SUNDAY, APRIL 25, 2010

08:00 Pick up from the hotel in Eilat for transfer to the Arava Border.

Cross the Arava border and drive to Petra, through the scenic Jordanian desert, past the Wadi Rum area.

Enter the Rose City of Petra through the Siq, a narrow awe inspiring passage through the mountains, which leads to the treasury which suddenly appears at the end of the gorge, leaving visitors breath-taken by the size, color and beauty.

Continue into the heart of this ancient city carved into the mountains, passing hundreds of tombs and monuments and a spectacular amphitheatre which once held 3,000 spectators.

After the visit to Petra, stop for a sit-down lunch. Return to the Arava border and back to Eilat at approximately 19:00.

Transfer from the Arava Border to the hotel in Eilat in time for the official get-together reception of the Tenth Eilat Conference on New Antiepileptic Drugs.

Rate for one person (single room): € 620

Rate for two people (double room): € 900

Rate includes:

- Overnight at the Renaissance Hotel in Tel Aviv, including bed and full Israeli breakfast
- One overnight at the Isrotel Royal Beach Hotel in Eilat, including bed and full Israeli breakfast
- Transfer from Tel Aviv hotel to Sde Dov Tel Aviv domestic airport
- Flight to Eilat
- Transfer from Eilat Airport to the Isrotel Royal Beach hotel
- Full day tour in Petra with an English-speaking guide in an air-conditioned touring coach
- Lunch
- Entrance fees as per itinerary
- Porterage
- Rates are based on a minimum participation of 15 participants

Rate does not include:

- Gratuities to guides, drivers and horse handlers (in Petra)
- Border taxes paid directly at the borders, approx. € 32.
- Taxi transfer from Ben Gurion Airport to hotel in Tel Aviv
- Personal expenses

Remarks:

We will pre-prepare visas for all participants. Please complete your details on the enclosed Accommodation Form in full. For most nationalities, visas can be obtained directly at the border. We will inform those who cannot obtain visas at the border, to personally secure visas prior to arrival in Israel.

**PRE-CONFERENCE OPTIONAL TOUR B –
DEAD SEA AND MASSADA****One night Tel Aviv, and Full Day Tour en route to Eilat****Itinerary****SATURDAY, APRIL 24, 2010**

All day: Arrivals

Overnight: Renaissance Hotel, Tel Aviv

SUNDAY, APRIL 25, 2010

Full-day tour to include the Dead Sea and Massada en route to Eilat

Rate for one person (single room): € 310

Rate for two people (double room): € 440

Rate includes:

- Overnight at the Renaissance Hotel in Tel Aviv, including bed and full Israeli buffet breakfast
- Guided tour en route to Eilat in an air-conditioned motor coach, including the services of an English-speaking, Government-licensed guide
- Entrance fees as per itinerary
- Porterage
- Rates are based on a minimum of 15 participants

Rate does not include:

- Gratuities to guides, drinks, insurance and meals

**POST-CONFERENCE OPTIONAL TOUR C –
JERUSALEM****Two nights Jerusalem****THURSDAY, APRIL 29, 2010**

Afternoon transfer to Jerusalem

Overnight: Inbal Hotel, Jerusalem

FRIDAY, APRIL 30, 2010

Start the day with a panoramic view of Jerusalem from Mount Scopus.

Enter the Old City via the Jaffa Gate and walk through the market to the Jewish Quarter. Visit the Cardo, the Herodian Mansions, the 16th century Sephardic Synagogues and the Hurva as you make your way down to the Western Wall Plaza. Enjoy a walking tour through the magnificent Kotel Tunnels. Continue and visit some of the Stations on the Via Dolorosa and the Church of the Holy Sepulcher.

Overnight: Inbal Hotel, Jerusalem

SATURDAY, MAY 1, 2010

Departures

Rate for one person (single room): € 650

Rate for two people (double room): € 800

Rate includes:

- Transfer from Eilat to Jerusalem. Domestic flights are sold on one way basis and a one-way ticket to Eilat should be purchased. There are no reductions for return flights.
- Two overnights at the Inbal Hotel, Jerusalem, including bed and full Israeli buffet breakfast
- Air-conditioned motor coach including the services of an English-speaking Government-licensed guide

- Entrance fees as per itinerary
- Porterage
- Rates are based on a minimum of 15 participants

Rate does not include:

- Gratuities to guides, meals, drinks, and personal insurance

IMPORTANT NOTES

- Personal travel and health insurance is recommended.
- Target Conferences reserves the right to change the hotel requested to that of a similar grade or better if they are unable to confirm the hotel listed in the brochure.
- All services are booked on the express condition that Target Conferences shall not be responsible for, and shall be exempt from, any and all liability in respect of any damage, injury or accident, to any person or for loss of or damage to his or her luggage or any other property, for any reason whatsoever.

CANCELLATION OF ACCOMMODATION

Up to 31 days prior to arrival - full refund less bank charges

Between 30 days and 7 days - cancellation charge of € 200 per room

Less than 7 days prior to arrival - at least two nights' accommodation or more, according to the hotel occupancy/leniency of the management at the time.

PRE/POST CONFERENCE ACCOMMODATION

Target Conferences will be happy to provide reservations and information for alternative optional touring and/or accommodation in Israel as well as Jordan and Egypt.

**TENTH EILAT CONFERENCE ON
NEW ANTIPILEPTIC DRUGS (EILAT X)
Eilat, Israel, April 25-29, 2010**

REGISTRATION FORM

Please **TYPE** or **PRINT** in **BLOCK LETTERS** and return by mail, email or fax to: Eilat X, P O Box 29041, Tel Aviv 61290, Israel
Tel: +972 3 5175150, Fax: +972 3 5175155, eilatx@targetconf.com

Family Name _____

First Name/s _____

Title: Prof. Dr. Mr. Ms.

Full Mailing Address _____

_____ State _____

Zip Code _____ Country _____

Tel _____ Fax _____

e-mail _____

Accompanying Person(s) Name(s)

Family Name _____ First Name _____

Family Name _____ First Name _____

REGISTRATION FEES

March 1, 2010

	Before	After
Participant	<input type="checkbox"/> € 500	<input type="checkbox"/> € 550
Student*	<input type="checkbox"/> € 350	<input type="checkbox"/> € 400
Young Delegate (under 35)**	<input type="checkbox"/> € 350	<input type="checkbox"/> € 400
Accompanying Person	<input type="checkbox"/> € 200	<input type="checkbox"/> € 250
Gala Dinner (optional)	<input type="checkbox"/> € 75	<input type="checkbox"/> € 75

* Upon presentation of bona fide student identification or official certification of status

** Upon presentation of copy of passport indicating date of birth

Enclosed please find **cheque** in the amount of € _____
payable to TENTH EILAT CONFERENCE
cheque no _____ Bank _____

I have made a **bank transfer** of € _____ as follows:
Bank Leumi, Gordon Branch, 87 Ben Yehuda Street, Tel Aviv, Israel
to account number **804-213993/74** (Copy enclosed)

Charge € _____ to **credit card** as below:
(as per US\$/EURO exchange rate on day of transaction)

American Express Diners Club MasterCard Visa

Credit Card No. _____

Numbers on back of card _____ Expiry Date _____

Signature _____ Date _____

**TENTH EILAT CONFERENCE
ON NEW ANTIPILEPTIC DRUGS (EILAT X)
Eilat, Israel, April 25-29, 2010**

ACCOMMODATION FORM

Please **TYPE** or **PRINT** in **BLOCK LETTERS** and return by mail,
email or fax to: Eilat X, PO Box 29041, Tel Aviv 61290, Israel
Tel: +972 3 5175150, Fax: +972 3 5175155, eilatx@targetconf.com

Family Name _____

First Name/s _____

Date of Birth _____ Place of Birth _____ Nationality _____

Passport No. _____ Date of issue _____ expiry _____

Title: Prof. Dr. Mr. Ms.

Full Mailing Address _____

Zip Code _____ Country _____

Tel _____ Fax _____

e-mail _____

I/ We require accommodation for the Conference as follows:

Isrotel Royal Beach Hotel **Royal Garden**

Single Occupancy Double Occupancy*

Check in date _____ Check out date _____ No. of nights _____

* I will share my room with _____

Arrival date: _____ Airline/Flight No: _____ at _____ hrs.

Departure date: _____ Airline/Flight No: _____ at _____ hrs.

All requests must be accompanied by a deposit of € 200 per room

OPTIONAL TOURS and ACCOMMODATION

Pre-Conference Optional Tour A – Tel Aviv/Eilat/Petra,
April 23-25, 2010

Pre-Conference Optional Tour B – Dead Sea and Massada,
April 24-25, 2010

Post-Conference Optional Tour C – Jerusalem,
April 29 - May 1, 2010

Please offer/arrange additional optional accommodation for me
in Tel Aviv/Jerusalem prior to/following the Conference,
from _____ till _____ (check-out date)

Payment by:

Cheque, payable to Target Conferences Ltd., herewith enclosed.

Bank transfer of € _____
made out to Target Conferences Ltd., Swift Code: Lumilil
Bank Leumi, Gordon Branch, 87 Ben Yehuda Street, Tel Aviv, Israel
Account number: 804-341500/08

Credit card, charge € _____ as follows:
(as per US\$/EURO exchange rate on day of transaction)

American Express Diners Club MasterCard Visa

Credit Card No. _____

Numbers on back of card _____ Expiry Date _____

Signature _____ Date _____

SOCIAL EVENTS AND DATES TO REMEMBER!

MONDAY, FEBRUARY 1, 2010

Deadline for submission of abstracts

MARCH 1, 2010

Deadline for Early-Registration Rate

SUNDAY, APRIL 25, 2010

Get-Together Reception

WEDNESDAY, APRIL 29, 2010

Gala Dinner (Optional)

CONFERENCE SECRETARIAT

For any additional information or assistance, please contact:

The Secretariat

EILAT X

PO Box 29041, Tel Aviv, 61290, Israel

Tel: +972 3 5175150, Fax: +972 3 5175155

e-mail: eilatx@targetconf.com

Visit our website: www.eilat-aeds.com

CONFERENCE TIMETABLE

SUNDAY, APRIL 25, 2010

Arrivals

Registration and distribution of material

Get-together Reception

MONDAY, APRIL 26, 2010

Opening Session

Session I

Boat Trip

TUESDAY, APRIL 27, 2010

Session II

WEDNESDAY, APRIL 28, 2010

Session III

Gala Dinner (Optional)

THURSDAY, APRIL 29, 2010

Session IV

Departures or optional extensions

www.eilat-aeds.com

